

## Industrial Solid Waste Summary

- It is any waste that is disposed of and not recycled other than hazardous waste or residential waste
- Four main types are construction and demolition materials, medical waste, special waste and other waste
- Store to prevent rodent and insect access, minimize odors, keep water out and prevent leaks
- Can only be stored on site or at a permitted facility
- Should not be stored for more than one year
- Waste tires fall under this category and have the following requirements:
  - Store for less than one year under cover and with means to control pests
  - Authorization is needed to store or transport more than 20 tires
  - Not allowed to be disposed of in a landfill prior to processing



Picture from the following website: <https://acontrarioicl.com/2017/01/23/organized-crime-and-waste-management/>

## Protecting the Vermillion River: Your Recreational Area

Part 28: Waste – Part D:  
Industrial Nonhazardous Waste

Lafayette Airport Commission  
Lafayette Regional Airport



Picture from the following website: [organmetro.gov](http://organmetro.gov)

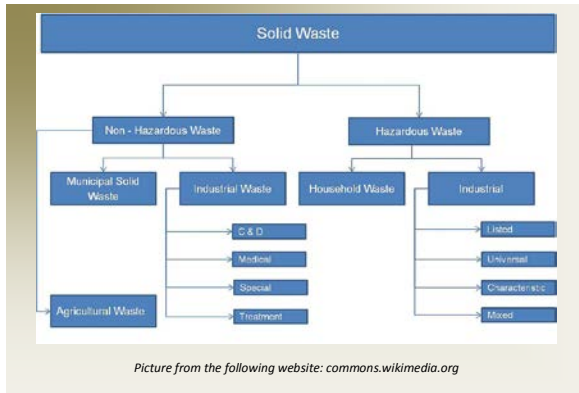
Lafayette Airport  
Commission

222 Jet Ranger X Drive  
Lafayette, LA 70508

Phone: 337-266-4401

Fax: 337-266-4410

[www.lftairport.com](http://www.lftairport.com)



## What is Industrial Nonhazardous Waste?

Industrial nonhazardous waste or industrial solid waste is any discarded material that is disposed of and not recycled other than hazardous waste or residential type (Municipal) waste. Wastes that are exempt from Industrial Solid Waste regulations are listed in LAC Title 33 Part VII. There are four main types of industrial solid waste: construction and demolition materials, medical waste, special waste and other waste, see Part 18: Waste – Part A: Nonhazardous Waste Overview for definitions of the Industrial Solid Waste types and municipal waste. This brochure and others can be found on the Airports website on the environmental page at:

<http://lftairport.com/environmental-management/>.



Picture from the following website: <http://disposabins.com/household-trash-cleanup/> and <http://dfwwasteoil.com/waste-absorbent-disposal-service.php>

## What are some requirements for Industrial Solid Waste Generators?

Requirements for storage of industrial solid waste are listed in Louisiana Administrative Code (LAC) Title 33:VII Chapter 4 and 5 and are as follows:

- Store only on site or at a permitted facility;
- Store to prevent rodent and insect access, minimize odors, keep water out and prevent leaks;
- Documentation should be kept to show that the waste has not been stored for more than one year; and
- Waste cannot be processed or disposed on site without a permit.

All records of offsite disposal need to be maintained for two years.



Picture from the following website: <https://www.ecodeal.pt/en/services/integrated-management-of-hazardous-and-non-hazardous-waste> and <https://www.ecoflo.com/hazardous-waste-disposal-atlanta/>



Picture from the following website: <https://zephyrenv.com/zephyr-services/waste-management/hazardous-and-solid-waste-management/> and <http://www.envcap.org/statetools/brsl/brsl2010.cfm?st=CA>

## Are there special requirements for Waste Tires?

Yes tires are not allowed to be disposed of in a landfill prior to processing and must be properly stored, transported and disposed as per LAC Title 33:VII Chapter 105. A summary of these requirements are as follows:

- Must be stored under cover to prevent water accumulation and with means to control pests. They should not be stored over one year.
- Shall not collect or store more than 20 whole waste tires unless you meet the following requirements:
  - Registered generator;
  - Are an authorized transfer station, collection center, or processing facility;
  - Are an authorized project site; and
  - Authorized.
- No person may transport more than 20 tires without having an authorization certificate.