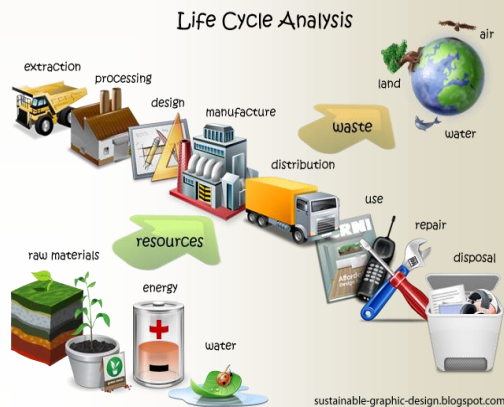


Nonhazardous Waste Summary

- All waste starts out in the category of solid waste
- There are two types of solid waste: hazardous or nonhazardous
- Nonhazardous waste is all waste that is not considered as a hazardous waste
- There are two type of nonhazardous waste: municipal solid waste and industrial solid waste
- Municipal solid waste is normal every day trash containing normal things that we use every day from places like homes and offices.
- Industrial solid waste consists of four categories: C&D waste, medical waste, other waste and special waste.



Lafayette Airport Commission

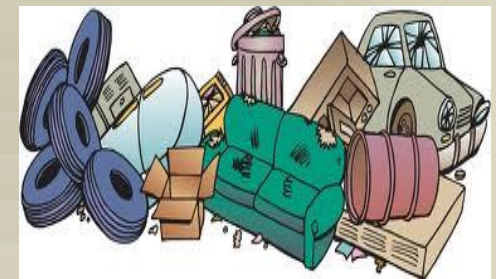
222 Tower Drive
Lafayette, LA 70508
Phone: 337-266-4401
Fax: 337-266-4410

www.lftairport.com

Protecting the Vermillion River: Your Recreational Area

Part 18: Waste – Part A:
Nonhazardous Waste Overview

Lafayette Airport Commission
Lafayette Regional Airport

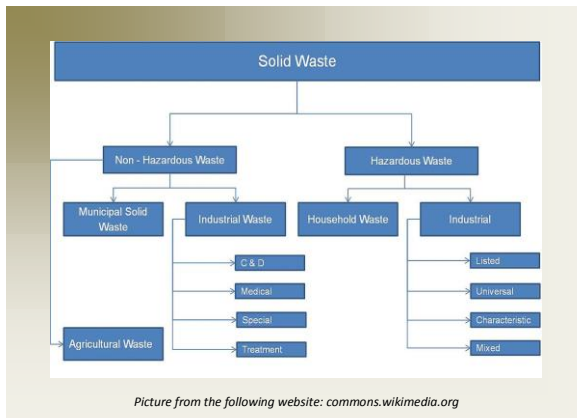


Picture from the following website: hagerstownmd.org

What is a waste?

All waste starts off in the category of solid waste unless the material is excluded under the regulations. A solid waste is any discarded material, material before recycling or material that is abandoned by being treated, burned or stored instead of being disposed. A solid waste is also a material that is applied or placed on land unless that is its ordinary use.

Once a material is considered a solid waste, it must be further evaluated to determine if it is a non-hazardous or hazardous waste.



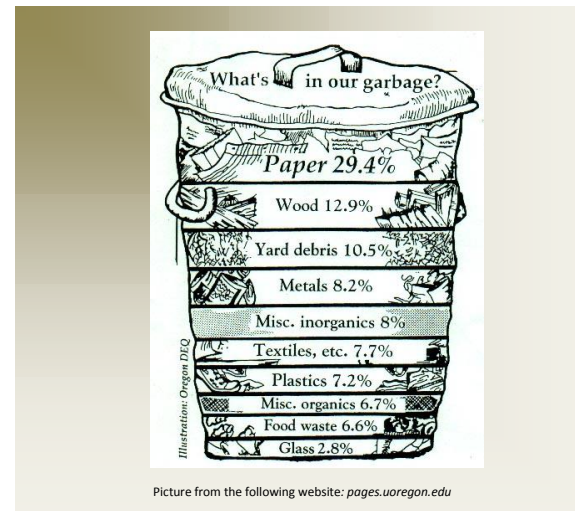
What is Non-Hazardous Waste?

Non-hazardous waste is all waste that is not considered to be a hazardous waste (more information will be provided in the future on Hazardous Waste). Non-hazardous waste is

broken up into two main categories – Municipal Solid Waste and Industrial Solid Waste.

What is Municipal Solid Waste?

Municipal solid waste or trash is garbage that contains ordinary things we use and then throw away like packaging, grass clippings, furniture, clothing, bottles, food scraps, newspapers, appliances, etc. This comes from our homes, schools, hospitals, and businesses.



What is Industrial Solid Waste?

There are four main types of industrial solid waste: construction and demolition materials (C&D), medical waste, special waste and other waste.

C&D waste contains debris generated during the construction, renovation, and demolition of buildings, roads, and bridges. Some examples

of C&D waste are concrete, building materials, trees and asphalt.

Medical waste is waste generated at health care facilities, such as hospitals, physician's offices, clinics, blood banks, dental practices and veterinary hospitals/clinics including medical laboratories and research facilities. Some examples of medical waste are used bandages, needles, gloves, etc.

Special wastes usually are generated in large volumes and were believed to possess less risk to human health and the environment than other wastes classified as hazardous waste. The six categories of special wastes included: cement kiln dust, mining waste, some oil and gas wastes, some phosphate rock mining waste, uranium waste and utility waste.

Other wastes are any wastes that are not hazardous wastes, are not municipal solid waste and don't fit into the other categories of industrial solid waste. An example is waste from an industrial process, spill cleanup or from a treatment system.

