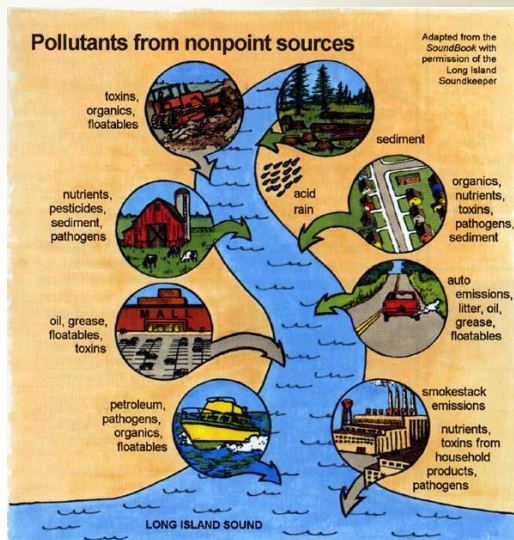


TMDL RECAP

- TMDL stands for Total Maximum Daily Load
- A TMDL is a study of a waterbody to determine the amount of pollutants it can accept and still be safe for activities such as fishing and swimming
- Public involvement is important in the TMDL process since people who live in the area know more about the waterbody
- Once a TMDL is approved for a waterway the findings are incorporated into permits for specific sources or in the Watershed Implementation Plan for non-specific sources.
- Louisiana performs water quality monitoring in waterways across the state on a cycle which allows for almost all the segments of Louisiana's waterways to be monitored.



Picture from the following web site: www.trincoll.edu

Lafayette Airport Commission

222 Jet Ranger X Drive
Lafayette, LA 70508
Phone: 337-266-4401
Fax: 337-266-4410

www.lftairport.com

Protecting the Vermillion River: Your Recreational Area

Part 25 – TMDLs - Total Maximum Daily Loads

Lafayette Airport Commission
Lafayette Regional Airport



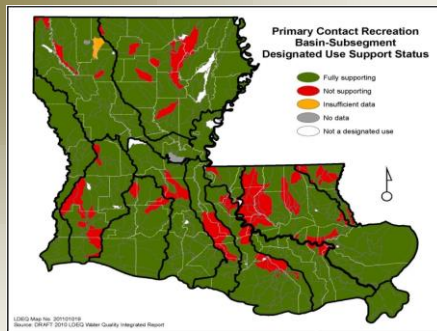
Picture from the following web site: nonpoint.deq.louisiana.gov



Picture from the following web site: www.epa.illinois.gov

What is a TMDL?

A TMDL (Total Maximum Daily Load) is a study of a waterbody to determine the amount of pollutants it can accept and still be safe for activities such as fishing and swimming. TMDLs were developed as part of the Clean Water Act. The EPA established the TMDL program so that waterbodies in all 50 states can be evaluated and plans can be developed to restore ones that are not safe for use.



Picture from the following web site:
<http://www.deq.louisiana.gov/portal/Portals/0/assistance/ELP/P2/Non-Point-final.pdf>

Why should I be involved in the TMDL process?

Public input is an important part of the TMDL process. People that live in the area of a waterbody often know more about the water quality of the waterway than the regulatory agency so their input helps to improve the value of the TMDL developed. Also the public can offer insight into the community in the area which aids in the success of the strategies used to restore the waterway.



Picture from the following web site: <http://www.movoto.com/blog/opinions/photos-of-louisiana/>

Louisiana's TMDL Program

Louisiana in cooperation with the EPA completed the development of TMDLs that were required by a signed consent order in 2012. TMDLs continue to be developed as required by the EPA.

Once a TMDL is developed for a waterway it is incorporated into Louisiana's Water Quality

Management Plan. Where through the Louisiana Pollutant Discharge Illumination System permit program issues found in the TMDL from specific sources are addressed. For non-specific sources Louisiana develops a Watershed Implementation Plan that describes the management practices that should be implemented to reduce pollutants and the programs that are available to implement the practices throughout the watershed.

As part of the TMDL Program, Louisiana performs water quality monitoring in waterways across the state to determine if water quality standards are being met. The monitoring is conducted on a four year cycle which allows for almost all of the segments of Louisiana's waterways to be monitored.

Information on Louisiana's TMDL Program is from the following website:
http://www.deq.louisiana.gov/portal/Portals/0/planning/TMDL%20Docs/TMDL%20Brochure_Final_2013.pdf



Picture from the following web site: <http://www.movoto.com/blog/opinions/photos-of-louisiana/>