

## Illicit Discharge Prevention Recap

Illicit discharges occur when anything other than rainwater enters a storm drain, ditch or waterbody. Water that enters the drainage system is not treated before it enters the nearest waterbody. Therefore any illicit discharges go directly into the nearest waterway where they can impact drinking water, kill fish, limit the amount of fish we can eat from an area or limit our recreational use of a waterway.

There are simple steps that we all can do to minimize impacts to our waterways some examples are as follows:

- Store materials indoors
- Keep all containers tightly sealed
- Store materials away from storm drains
- Properly dispose of trash
- Properly dispose of all waste oils, chemicals, pesticides, etc.
- Apply fertilizers and pesticides as per the manufactures directions
- Insure septic systems are properly operating

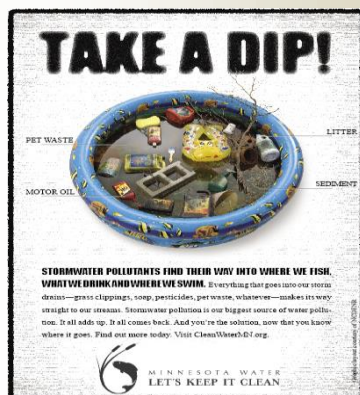


Image from the following website <http://www.cleanwatermn.org/>

Lafayette Airport  
Commission

222 Jet Ranger X Drive  
Lafayette, LA 70508  
Phone: 337-266-4401  
Fax: 337-266-4410

[www.lftairport.com](http://www.lftairport.com)

## Protecting the Vermillion River: Your Recreational Area

Part 23 – Illicit Discharge  
Prevention: Updated

Lafayette Airport Commission  
Lafayette Regional Airport



Picture from the following web site: [nonpoint.deq.louisiana.gov](http://nonpoint.deq.louisiana.gov)



Image from the following website: [www.charlottesville.org](http://www.charlottesville.org)

## What are illicit discharges?

Illicit discharges occur when anything other than rainwater enters a storm drain, ditch or waterbody. Some exceptions are water from firefighting activities and discharges that are covered by a discharge permit. Common illicit discharges are trash, fertilizers, oils, wash water, pesticides, and sewage.



Image from the following website: <http://cfpub.epa.gov/>

## How can illicit discharges affect me?



Fertilizers cause high levels of nutrients in waterways. This causes algae blooms that can lead to low levels of oxygen in the water and fish kills.



Oils and pesticides contain toxic compounds and metals that can end up in our drinking water and accumulate in aquatic organisms.



Trash can clog drainage systems causing flooding, harm wildlife and take away the beauty of our waterways.



Sewage can contain harmful bacteria and toxic compounds that can make it unsafe to swim, fish, or do other recreational activities in our waterways.

Images from the following websites: [glisa.umich.edu](http://glisa.umich.edu), [eoearth.org](http://eoearth.org), [vermillionville.org](http://vermillionville.org), [mnscluba.com](http://mnscluba.com)

## Illicit Discharge Prevention Tips

1. Store materials indoors
2. Keep material inventories to a minimum
3. Keep all containers tightly sealed
4. Store materials away from storm drains
5. Perform maintenance activities indoors and away from storm drains
6. Use spill prevention measures during maintenance activities
7. All oil collected should immediately be transferred to a designated storage container
8. Containers of oil with a capacity greater than or equal to 55 gallons should have secondary containment with a minimum

freeboard of 110% of the containers capacity

9. Containment structures should be checked regularly for liquid accumulation. If any liquid other than rain water (i.e. fuel, oil, etc.) is present, then the liquid must be properly disposed

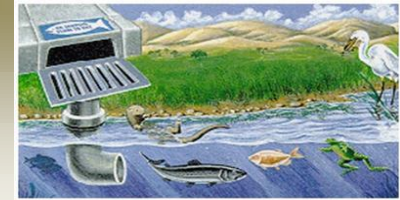


Image from the following website: <http://www.morro-bay.ca.us/>

10. All drums, tanks, and containers should be routinely inspected for leaks
11. Properly dispose of trash in containers with lids
12. Properly dispose of all waste oils, chemicals, pesticides, etc
13. Apply fertilizers and pesticides as per the manufactures directions
14. Insure septic systems are properly operating

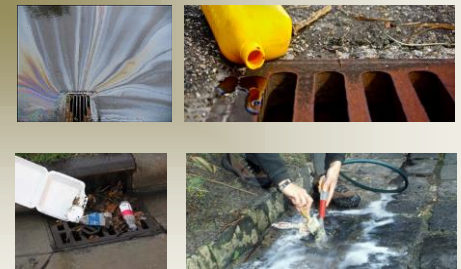


Image from the following website: [ausmepa.org.au](http://ausmepa.org.au), [prairierivers.org](http://prairierivers.org), [villageofhoward.com](http://villageofhoward.com), [cwsec-sc.org](http://cwsec-sc.org)