

Spill Reporting Contact Numbers

- **Lafayette Fire Department**
 - 911 or 337-291-5501
- **Lafayette Police Department**
 - 911 or 337-291-8600
- **Ambulance**
 - 911
- **Louisiana State Police**
 - 225-925-6595
- **Louisiana Department of Environmental Quality (LDEQ) Single Point of Contact**
 - 225-342-1234
- **LDEQ Acadian Regional Office**
 - 337-262-5584
- **LDEQ Main Office**
 - 866-996-5337
- **LDEQ Surveillance Division**
 - 225-219-3615
- **USEPA Region 6 Head Quarters**
 - 214-655-2253
- **USEPA Region 6 24-hr Hotline**
 - 866-372-7745
- **National Response Center**
 - 800-424-8802
- **National Weather Service**
 - 817-871-8291

Lafayette Airport
Commission
222 Tower Drive
Lafayette, LA 70508
Phone: 337-266-4401
Fax: 337-266-4410

www.lftairport.com

Protecting the Vermillion River: Your Recreational Area

Part 7 – Spill Response Procedures

Lafayette Airport Commission
Lafayette Regional Airport



Picture from the following web site: nonpoint.deq.louisiana.gov

What qualifies as a spill?

A spill includes, but is not limited to, the following: any spilling, leaking, pumping, pouring, emitting, emptying, or dumping of oil, process waste water or any other pollutant without prior approval from federal, state and/or local authorities. A spill can be as small as a drip from a leaking gasket to as big as a hole in an oil tanker.



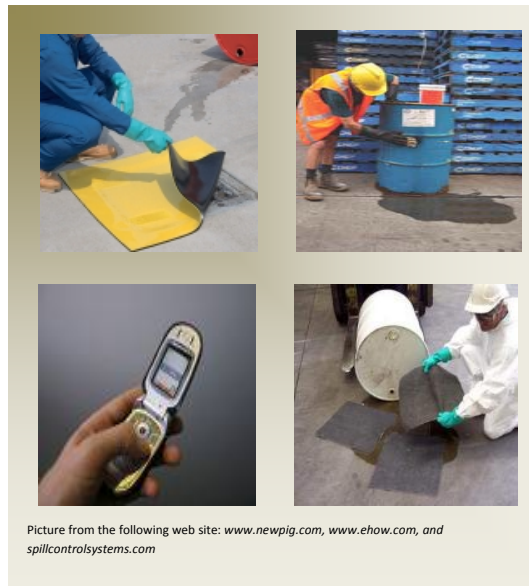
What should I do if a spill occurs?

In case of a spill the following steps should be taken:

1. **If possible to do safely**, stop the source of a spill immediately and take action to keep

the spill from reaching surface waters such as storm drains, ditches, bayous, etc.

2. If conditions are **hazardous** (e.g., fire or potential explosion), **DO NOT APPROACH**. If possible to do so **safely**, shut down all sources of potential sparks, flames, or heat in the area of the spill.
3. Determine the source, type, and quantity of material spilled.
4. Contact the Airport Response and Fire Fighting Department (ARFFD) and Airport Security immediately.
 - a. Contact ARFFD at 337-233-1652
 - b. Security at 337-266-4461



What are some ways I can stop a spill from reaching surface waters?

Since the reportable quantity for spills of substances such as oils into surface waters is the quantity sufficient to create a sheen; it is very important to keep spills out of surface waters. Some examples of surface waters are storm drains, ditches, and bayous.

There are a number of ways to keep spills from reaching a surface water body some examples are as follows: place a boom between the spill and the water body, build a berm to stop the movement of the spill towards the water body, use absorbent materials such as wood chips, paper, vermiculite, etc. to absorb the spill so it does not reach a water body, and dig a ditch to redirect the spill.

