

## Permit Requirements

- **Only biodegradable soaps** may be utilized in the wash areas.
- **No maintenance** may be conducted in or around the wash areas.
- **No tire cleaners, protectants, restorers, solvents, etc.** may be used in or around the wash area.
- **Only the exterior** of equipment, vehicles, and aircraft may be washed in the wash areas.
- **Tank trucks with accumulation of product on the outside of the tank may not be washed** in the wash areas.
- **Washing of the outside of engines with products other than biodegradable soap is not allowed** in the wash areas.
- There shall be **no discharge of floating solids, oil, or visible foam.**
- There shall be **no sheen or visible stains** associated with the discharge.



Pictures from the following web sites: [www.lodi.gov](http://www.lodi.gov) and [acleancar.com](http://acleancar.com).

Please feel free to contact Ashley Simon, PE with Lafayette Airport Commission - Environmental Officer, if you have any questions at 337-266-4401.

Lafayette Airport  
Commission

200 Terminal Drive  
Lafayette, LA 70508  
Phone: 337-266-4401  
Fax: 337-266-4410

[www.lftairport.com](http://www.lftairport.com)

## Protecting the Vermillion River: Your Recreational Area

Part 6 – Vehicle, Equipment, and  
Aircraft Washing

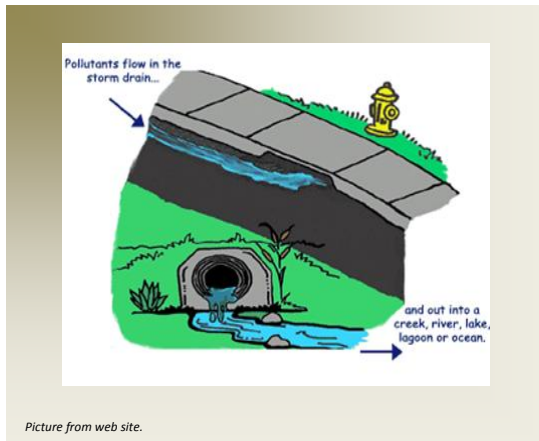
Lafayette Airport Commission  
Lafayette Regional Airport



Picture from the following web site: [nonpoint.deq.louisiana.gov](http://nonpoint.deq.louisiana.gov)

## Why does the Airport have a wash permit?

According to the Environmental Protection Agency (EPA), a waste water permit is required if wash water is allowed to run off the property and into a conveyance, including a storm water drain, leading to a Water of the United States. Therefore since wash water flows into the storm drainage system and then to the Vermillion River, the Lafayette Airport Commission maintains all requirements of the Water Discharge Permit for Exterior Vehicle Wash Wastewater.

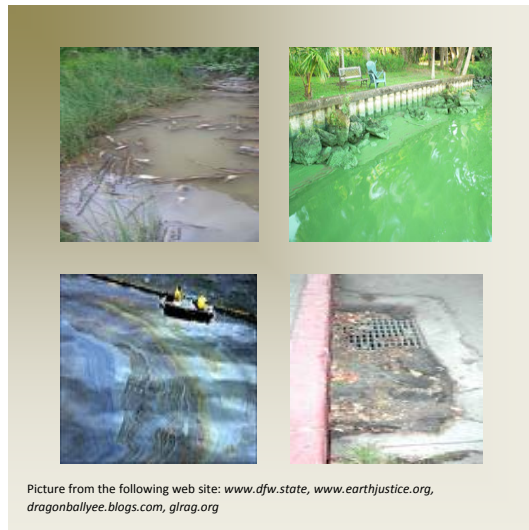


## What impact does wash water have on the environment?

According to the EPA, wash wastewater can have a great impact on the environment if not

properly managed and discharged. Car wash wastewater can be harmful to humans, plants, and animals if released untreated to surface water bodies because the wash water can contain harmful contaminants such as:

- Oil and grease, which contain hazardous materials such as benzene, lead, chromium, arsenic, etc,
- Detergents that can be poisonous to fish,
- Phosphates, which can cause excessive growth of nuisance plants in water bodies,
- Chemicals, such as acids and solvent-based solutions that are harmful to organisms,
- Chemicals and oils used for the cleaning machinery, and
- Debris that can clog storm sewer inlets.



## Where should washing be conducted?

The red markers shown in the above map mark the designated wash areas located on the ramp. According to our Discharge Permit, washing must only be conducted in designated areas. This is due to the fact that the permit requires the treatment and sampling of wash wastewaters. Where needed oil skimmers, debris removal mats, and other treatment devices are placed in these areas to insure compliance with permit sample limits for sheen, oil and grease, chemical oxygen demand, pH, and suspended solids.