

Summary

- A SPCC Plan defines and specifies procedures, methods, equipment and other requirements that a site must follow.
- SPCC Plans are required for facilities that store oil or other listed substances either with a total aboveground capacity greater than 1320 gallons or in a single container with a capacity of 660 gallons or greater.
- Product such as fuels, motor oils, vegetable oils, and lards are all considered oils.
- Depending on your storage capacity and spill history, you have two options on how you develop your SPCC Plan.



Pictures from the following web sites: engelsgroup.com.

Lafayette Airport
Commission
222 Tower Drive
Lafayette, LA 70508
Phone: 337-266-4401
Fax: 337-266-4410

www.lftairport.com

Protecting the Vermillion River: Your Recreational Area

Part 16 – Spill Prevention, Control and
Countermeasures (SPCC) Plans

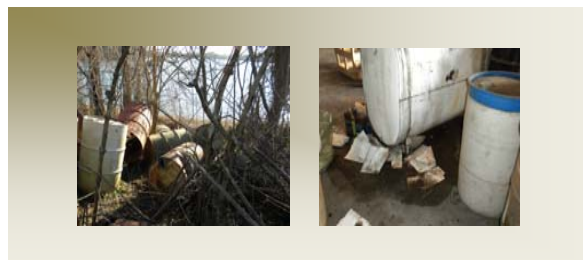
Lafayette Airport Commission
Lafayette Regional Airport



Picture from the following web site: <http://www.twu.edu/rm/SPCC.asp>

What is a SPCC Plan?

A SPCC Plan is a plan some facilities located either onshore or offshore which store oil or other substances in containers with a volume greater than or equal to 55 gallons may need to prepare and implement. The plan defines and specifies procedures, methods, equipment and other requirements that the site must follow as per the Code of Federal Regulations Title 40 Part 112 and Louisiana Administrative Code (LAC) Title 33 Part IX to protect people and the environment from releases of oil or other substances (liquids) listed in LAC 33:I.3931 in amount that could be harmful.



What products meet the definition of oil?

The word *oil* means oil of any kind or in any form, including fats, oils, and greases from plants or animals; petroleum; fuel oil; sludge; synthetic oils; mineral oils; waste oils; or oils mixed other wastes. Therefore, product such

as fuels, motor oils, vegetable oils, and lards are all considered oils.



How do I determine if my site needs a SPCC Plan?

If your site has an aboveground oil storage capacity of 1320 gallons or more, 660 gallon capacity or more of an individual container, or an underground oil storage capacity of 42,000 gallons or more then you are required to have a SPCC Plan. Additionally in Louisiana substances other than oil which are normally liquids listed in LAC 33:I.3931 can also trigger the requirement for a SPCC Plan. When you calculate your aboveground storage capacity you should count only containers that are greater than or equal to 55 gallons in capacity. Also the following containers are not counted in your aboveground storage capacity: permanently closed containers, motive power containers, asphalt containers, pesticide mixing containers and milk storage containers. There

are also some exemptions to the requirements as follows: if the facility could not reasonably be expected to have a discharge of oil in amount that could be harmful and equipment or vessels that are under the authority of the US Department of Transportation or the US Department of Interior.

What are my options when it comes to developing a SPCC Plan?

The options you have on how the SPCC Plan will be developed for your site depend on the total storage capacity for your site. If your total oil storage capacity is less than 10,000 gallons and you have not had a reportable spill in the last three years then you can prepare and certify your own SPCC plan. Templates are provided in the 40CFR 112 to aid you in developing your own plan. If you don't meet the above then you must have a Professional Engineer prepare and certify the plan for your site.

